



November 2021						
Mon	Tue	Wed	Thu	Fri	Sat	Sun
1	2	3	4	5	6	7
8	9	10	11	12	13	14
15	16	17	18	19	20	21
22	23	24	24	25	26	27
28	29	30				

Nursery News October 2021

New Nursery Telephone Number : 024 777 52392

Hello All

I want to say again a huge thank you to you all for following all the COVID guidance that is in place. As we are working in collaboration we are reducing the risk of the spread of COVID within our community - thank you!

The senior leadership team have completed learning monitoring walks over the last week in both nursery environments and it has been wonderful to share such outstanding positive relationships that have been formed between children and staff.

Can I please ask that you continue to follow our schools COVID risk assessment by continuing to follow the items below:

- If your child is poorly, unwell, or out of sorts, please do not bring them to school. Keep them off until they are well.
- If your child needs to have Calpol before coming into nursery, then do not bring them in. The fact they need Calpol shows that they are not well in themselves.
- Please do consider wearing a mask at the school gates.
- Please do keep a good social distance from other families.
- In nursery, ventilation is key and windows and doors will be able to let the airflow through.
- We will continue with our cleaning plan.
- To follow the self-isolation rules when presenting with COVID symptoms - we have to be strict when following this guidance as we are seeing such a rise in the positive COVID cases in our area and we owe a duty of care to all of our nursery community.

The main symptoms of coronavirus (COVID-19) are:

- a high temperature – this means you feel hot to touch on your chest or back (you do not need to measure your temperature)
- a new, continuous cough – this means coughing a lot for more than an hour, or 3 or more coughing episodes in 24 hours (if you usually have a cough, it may be worse than usual)
- a loss or change to your sense of smell or taste – this means you've noticed you cannot smell or taste anything, or things smell or taste different to normal

If you have any of these symptoms, get a PCR test (test that is sent to a lab) to check if you have coronavirus and stay at home until you get your result, even if the symptoms are mild.

Please phone if you want to talk through any of the symptoms your child is experiencing we are here to help and support and if we do not know the answer, we will call public health.

If your child tests POSITIVE for COVID over the first weekend of the school holiday (23rd and 24th Oct) please do call me to let me know on 07775 411 769 and I will make sure that close contacts are advised.

Please do have a good half term and we will welcome our children back on Tuesday 2nd November. On Monday 1st November we have a teacher training day and the focus for the nursery staff team is further training on SEND (special educational needs and disabilities). Our IDS (integrated disability service) teacher Clare Woodman will be leading the training for the team.

Nicci

Dates for your Diary

Teacher Training Days for this School Year are:-1st November /4th January /6th June— Nursery will be closed on these days.

October Half Term Week: 25th October — 29th October — Nursery Closed

Teacher Training Day: Monday 1st November 2021 — Children return on Tuesday 2nd November 2021

Christmas Holidays: 20th December 2021—31st December 2021- Nursery Closed

Bank Holiday Monday—3rd January 2022

Teacher Training Day—Tues 4 January 2022— First day Nursery open Weds 5th Jan 2022

February Half Term—21st February - 25th February 2022

Easter Holidays — 11th April— 22nd April 2022

Please do let us know if your child is going to be absent from Nursery School - whether it is because of illness, Covid Symptoms, family circumstances or holiday. Call **024777 52392** and leave an absence message or tell the reception staff.

Some reminders:

- Can we please ask that all children have appropriate clothes, footwear and a suitable coat for the weather. Also, can all children have a coat that has their **name** inside it! Remember to apply sun cream if it is sunny!
- Please could we ask that **no sweets** are put into your child's lunch box as we like to promote healthy eating and good oral health.
- Due to some of our children having a severe Nut allergy, - **NO NUTS, OR NUT PRODUCTS ALLOWED.**
- We welcome nursery contributions, we ask for a weekly donation of £1.50, or if you wish to pay for the term, please call the school office and they can advise the amount. All payments must be through the bank, we are no longer allowed to accept cash. **Our account details are: Account No: 48141468, Sort Code No: 20-84-79, please quote your child's name on the transaction, followed by the letters NF.** We do really appreciate receiving these contributions.
- Please can we ask that all children have sent in spare, **named**, clothes, including socks kept in their nursery bag which is kept on their coat peg.
- Please could we request a donation of tissues. If you can please drop a box of tissues into Nursery — thank you!

Keeping Everyone Safe - Some reminders:

- Please close all gates and doors behind you. This is to keep all of our children safe.
- Please do not park on the yellow zig zags outside Nursery. If the fire engine needs to attend an emergency to save a life and your car is in the way, they will move it by whatever means available!
- **Parking Reminder:** Please **do not** park on the coned-off pavement area. It is illegal to park over the fire hydrant and to do so will incur a parking fine. Please keep this paving area clear.
- Please let us know, by phoning the Nursery if someone else will be collecting your child. Remember, we will not let your child go with someone we don't know or haven't been told is collecting your child. Passwords must be used.



Regular school attendance is important for the children to make relationships and learn. However, young children do become poorly, especially at this time of year, so please keep them at home if they are unwell. Thank you very much to everyone for co-operating in letting us know when your child can not attend. We are very grateful for the phone calls and messages.

Remember—with vomiting sickness and diarrhoea please give a clear 48 hours before sending your child back to nursery. Thank you.



Important contact details

Bedworth Heath Nursery School:
Telephone No: 024 777 52392

Website:
www.bedworthheathnurseryschool.com

Please have a look and like our Nursery Facebook page to receive information on the children's learning experiences.

Facebook - Bedworth Heath Maintained Nursery School and Warwickshire Teaching School.

Orchard and Daisy Nursery

UPDATE FROM BEDWORTH HEATH NURSERY SCHOOL

We have reached the end of our first half term and the children are now really settled into Nursery life.

Thank you for continuing to adapt to our ways of working to keep our school community safe. We really appreciate that you take extra care and consideration for others when your child is ill. It has been difficult with the rise in Covid cases locally, but your vigilance and co-operation in taking your child for a PCR test has helped to keep cases in Nursery low.

CURRICULUM

We have been learning the rules and routines of Nursery and the children now know what is expected when playing in our environment. They may have mentioned the phrase, 'choose it, use it, put it away' which is something we say when they play with the toys. We have also enjoyed learning about Autumn, finding leaves in the playground and using them to create collages.

This week we have turned our attention to pumpkins. The children are exploring a wide range of pumpkins - different sizes and different colours. We will be comparing the sizes and the weight and also chopping them up to look inside.

NURSERY CLOTHES

Could we please remind parents and carers to write their child's name in **ALL** clothes that their child wears to Nursery. Trying to match 10 red sweatshirts to the correct children is quite a feat at the end of the session! The weather is only going to get wetter and colder as we edge into Winter. Please ensure that your child wears a suitable coat every day and robust shoes that will protect your child's feet from wet playgrounds and puddles!

OPAL ASSESSMENT

This year, we have adopted a new assessment tool to measure the progress that your child is making. Please read the information that you will receive as an email, after Half Term, as Parent meetings will take place throughout the year, not at the end of term as we did previously.

Our first meetings will start the week beginning 8th November. They will be a short phone call with your child's key person.

We hope that you enjoy half term, with lots of activities related to Autumn.

We will see you all again on Tuesday 2nd November.

Stay safe.

The Nursery Team

The council's Local Welfare Scheme continues to help residents at times of unavoidable crisis when they have no other means of help and can provide financial support and advice for people in crisis who need support to access food and utilities. The scheme also signposts to further support available from other public, community and voluntary services around the county.

Details are below...

Contacts:

Warwickshire Local Welfare Scheme

01926 359182 or 0800 408 1448

www.warwickshire.gov.uk/localwelfarescheme

For information about wider support from the council and other services, go to: www.warwickshire.gov.uk/facinghardship



Barbara Charles, Family Support
and Pastoral Manager

Contact Details:

Email: Charles.b@welearn365.com

Mobile: 07833 288959 *call or text.*

Nursery Temporary No: 07918940854

Helpful Organisations: <https://www.refuge.org.uk/> (for domestic abuse help)

<https://bedworth.foodbank.org.uk/get-help/how-to-get-help/>

<https://brancab.org.uk/> (Bedworth Citizens Advice Bureau)

<https://www.warwickshire.gov.uk/children-families> (Family Information Service)

- We have attached a Coventry guide to October Half Term Activities to this month's Newsletter.
- We have also attached an updated 'Choking Hazards' Poster you may find useful.

Parents/Carers, please remember the

Parent/Carer Code of Conduct

-that you have all read and agreed to during induction.

Please be kind, respectful and polite to staff at the gates.

Staff are following new **Government Protocol** and guidance from **Public Health England** to keep your children and staff as safe as we possibly can throughout the Coronavirus Pandemic.

- There will be times when we have to ask questions.
 - There will be times when we ask you to wait whilst asking for guidance from Senior Leaders.
 - There will be times when we need a second opinion as the guidance changes daily.
 - Please be patient. This is for everyone's safety.

Thank you for helping us- you really make a difference in keeping our nursery community safe.

Bedworth Heath Nursery School
and Early Years Teaching Centre



'You make the difference,
today, tomorrow, together'

New Symptoms and updates on children who are "unwell" and Nursery attendance

The three main COVID symptoms remain the same, this is when self isolation rules come into place for the family/extended bubble and a COVID test needs to be done.

The main symptoms are:

A high temperature—this means you feel hot to touch on your chest or back (you do not need to measure your temperature)

A new, continuous cough—this means coughing a lot for more than an hour, or 3 or more coughing episodes in 24 hours (if you usually have a cough, it may be worse than usual).

A loss or change to your sense of smell or taste—this means you have noticed you cannot smell or taste anything, or things smell or taste different to normal.

To help keep your child and our nursery community safe, your child **should not** come to school if:

Feeling unwell with a runny nose (not solely a runny nose)

Sore—throat and a non-continuous cough

Ear—infection

Extreme tiredness and fatigue

Head ache

Childhood illnesses such as chickenpox, etc (to return when the first spot has crusted over)

Viral infections

A cold (runny nose, tired, cough)

Vomiting and diarrhoea (to remain at home until at least 48 hours since last loose bowel motion before returning)

A new rash appearing

Of course, some of these symptoms are not unusual in younger children at any time, but it is important to be extra-vigilant and not send your child to nursery if you are in any doubt.

If you are unsure, please just call us for advice.

Parents and Carers

Please remember!

Only 1 Parent or 1 Carer at a time, to enter through the green gates



Please remember to follow good social distancing, 2 metres apart

Please consider wearing a face covering / facemask at the school gates



Please refrain from smoking or using an e-cigarette outside the school gates

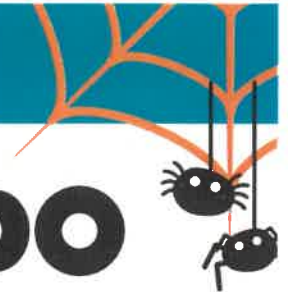


Can we also please ask that no mobile phones are used on the entrance area to school - so that staff can chat to families on the hand over





THINGS TO DO IN COVENTRY



THE ULTIMATE WHAT'S ON GUIDE FOR FAMILIES TO FIND THINGS TO DO IN THE LOCAL AREA

www.coventryrocks.co.uk

OUR SPOOKIEST BUTTON YET!



HALLOWEEN FUN FOR ALL THE FAMILY

At Coventry Rocks we LOVE Halloween - and if you're looking for things to do, we've got you covered. Pop along to www.coventryrocks.co.uk and hit our 'Halloween' button to find HEAPS of local Halloween events and places to visit.

Visit the website and see for yourself!

PUMPKIN PICKING NEAR COVENTRY

Whilst it's easy to buy a pumpkin in the supermarket, it's great fun to pick your own! Pumpkin Picking is a great activity to do with the whole family, and there are lots of places around Coventry where you can pick the perfect pumpkin!



PUMPKIN PICKING NEAR COVENTRY

Read our article here.



FOLLOW US AND JOIN THE COMMUNITY!

There are thousands of local parents following us Social Media, and we'd love for you to join in! Just search Coventry Rocks and like our page!

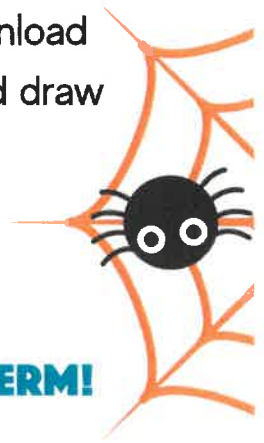




HALLOWEEN PRINTABLES

Give the kids something to do this half term with our Halloween printables! These printables are perfect for kids of all ages. Just download and print the PDFs and colour, paint, and draw some masterpieces for your window!

[Click here to print them!](#)



SOME OF OUR FAVOURITE EVENTS AND ACTIVITIES FOR HALF TERM!

Find them all on the website, or click the images for all the details.



FOLLOW US AND JOIN THE COMMUNITY!

There are thousands of local parents following us Social Media, and we'd love for you to join in! Just search [Coventry Rocks](#) and like our page!





Early years choking hazards food safety advice

.....

For babies and young children, food can be a choking hazard, especially when they do not chew their food well or they try to swallow it whole.

Choking can happen with any foods, but 'firm foods', bones and small round foods that can easily get stuck in the throat present a higher risk. Therefore, care givers should follow these five essential steps:

- 1** Make sure food is **suitably prepared and served** for babies and children under 5 years old. For suitable foods, see <https://www.nhs.uk/start4life/weaning/> Introduce babies to solid foods from around 6 months of age.
- 2** **Think about size, shape and texture of food.** Cut food into narrow batons, avoid round shapes and firm foods. Firm fruit & vegetables can be softened by cooking.
- 3** Ensure that babies and young children are **alert and seated safely upright** in a highchair or appropriately sized low chair whilst eating.
- 4** **Babies and young children should be supervised at all times** while eating. You will be able to identify the early signs of choking and prevent harm.
- 5** **Encourage babies and young children to chew food well.** Teach children how to chew and swallow food properly, and ensure they take their time during meals. This will reduce their risk of choking.

Care givers and parents should be familiar with how to respond to a choking incident in line with guidance on first aid for children:

How to stop a child from choking: <https://www.nhs.uk/conditions/baby/first-aid-and-safety/first-aid/how-to-stop-a-child-from-choking/>

How to resuscitate a child: <https://www.nhs.uk/conditions/baby/first-aid-and-safety/first-aid/how-to-resuscitate-a-child/>